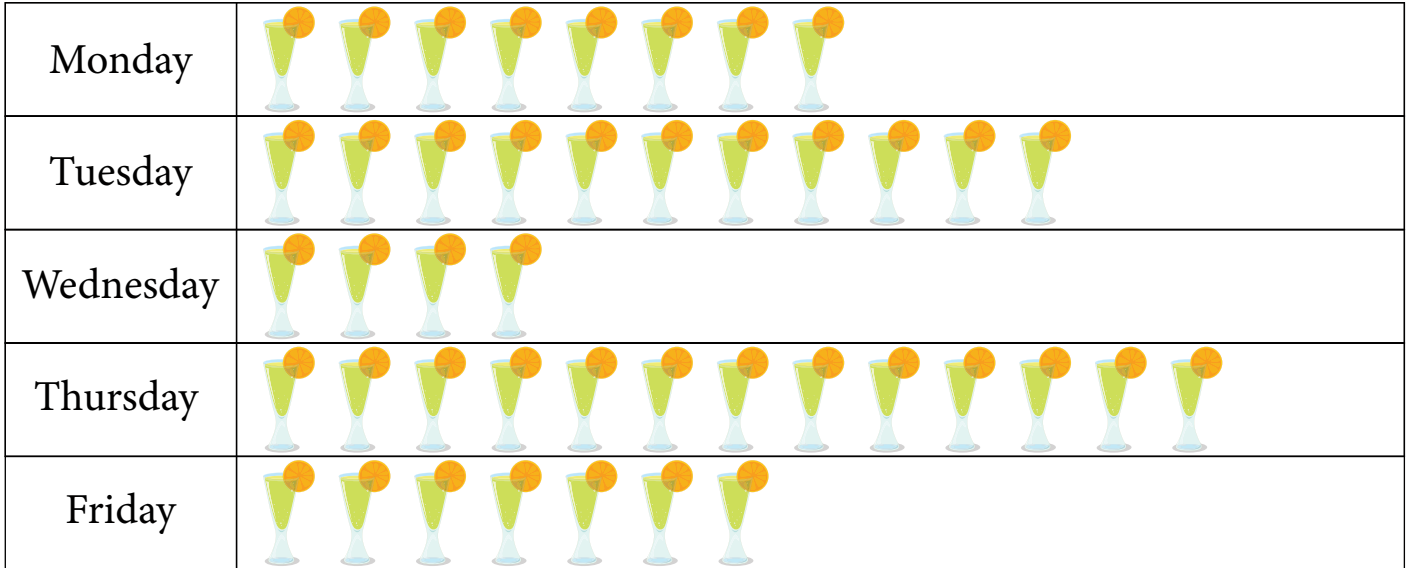


NAME :

SECTION :

ROLL No.

Q. Summer brings icy drinks with it. So, answers the questions on the basis of the following pictograph which shows the number of drinks sold in these week days:



(a) Which day had the minimum sale of drinks?

Ans. _____

(b) Which day had the maximum sale of drinks?

Ans. _____

(c) How much drinks were sold in all the weekdays?

Ans. _____

(d) Which day had more sale than Tuesday and by how much?

Ans. _____

(e) Which day had less sale than Friday and by how much?

Ans. _____



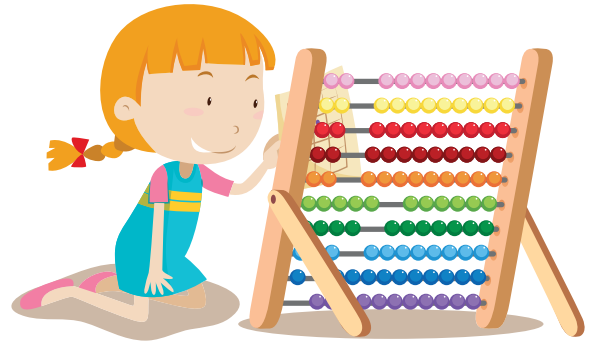
NAME :

SECTION :

ROLL No.

Q.1 The following table shows the no. of teddy bears sold in a factory in 4 weeks. Answer the question based on this table:


Weeks	No. of teddy bears
Week 1	23
Week 2	34
Week 3	24
Week 4	53



- (a) Which week had the minimum sale of teddy bears? _____
- (b) Which week had the maximum sale of teddy bears? _____
- (c) How much teddy bears were sold in all the week? _____
- (d) Which week had more sale than Week 1 and by how much?

Q.2 Complete the table which shows the number of children in a class who like different T.V. cartoon channels using symbols to represent the following information according to the scale:

Cartoon channel	No. of Children
Cartoon Network	12
Pogo	15
Hungama	21
Disney	27

Scale  = 3 children

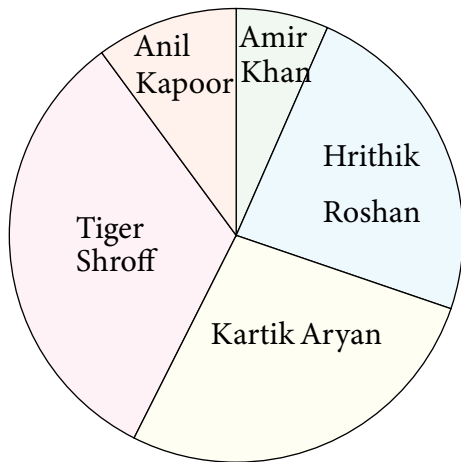
Cartoon channel	No. of children
Cartoon Network	
Pogo	
Hungama	
Disney	

NAME :

SECTION :

ROLL No.

Q.1 The following pie chart shows the favourite movie actors of some children in a class. Answer the questions that follow:



(a) Who is the most popular actor?

(b) Who is the least popular actor?

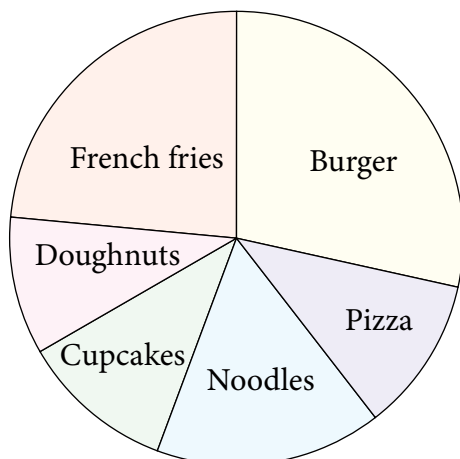
(c) Who is more popular actor - Amir Khan or Tiger Shroff ? _____

(d) Who is less popular - Anil Kapoor or Hrithik Roshan ? _____

(e) Who is more popular - Tiger Shroff or Hrithik Roshan ? _____

(f) Who is less popular - Anil Kapoor or Amir Khan ? _____

Q.2 The following pie chart shows the favourite food items of children in a school. Answer the questions that follow:



(a) What is the most popular food item?

(b) What is the least popular food item?

(c) What is more popular - Pizza or Burger?

(d) What is less popular - Noodles or French Fries ? _____

(e) What is the second-most popular food item? _____

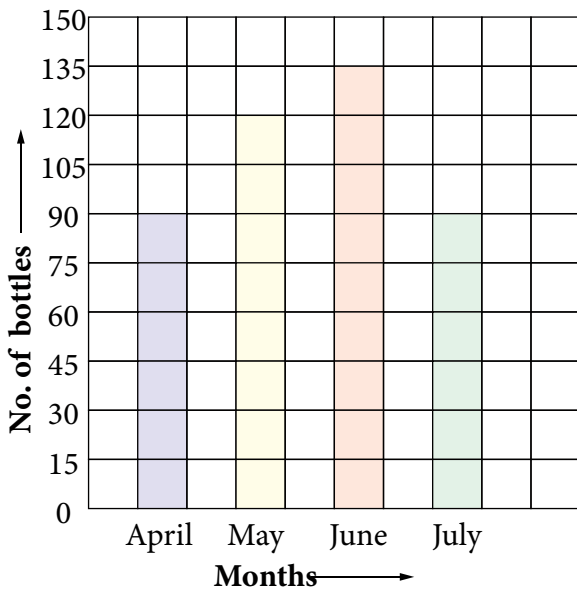
(f) What is the second-least popular food item? _____

NAME :

SECTION :

ROLL No.

Q.1 The following bar graph shows the number of juice bottles sold in the following months. Answer the questions that follow:



(a) In which month the most no. of bottles were sold? _____

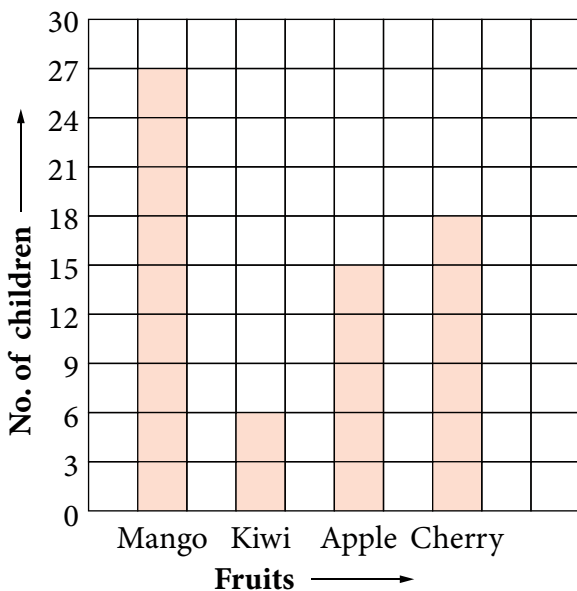
(b) In which month the least no. of bottles were sold? _____

(c) How many more bottles were sold in June than July? _____

(d) How many less bottles were sold in April than June? _____

(e) Which two months have the same number of sold bottles?

Q.2 The following bar graph shows the number of fruits liked by the children in a class:



(a) Which fruit is liked by most of the children?

(b) Which fruit is liked by least of the children?

(c) How many more children like Mango than Kiwi? _____

(d) How many less children like Apple than Mango? _____

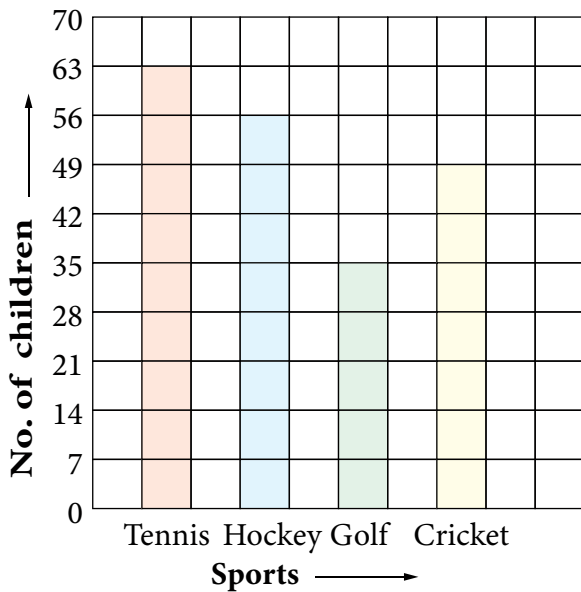
(e) How many less children like Kiwi than Cherry? _____

NAME :

SECTION :

ROLL No.

Q.1 The following bar graph shows the number of children choosing different sports. Answer the questions that follow:



(a) What no. of children chose Golf?

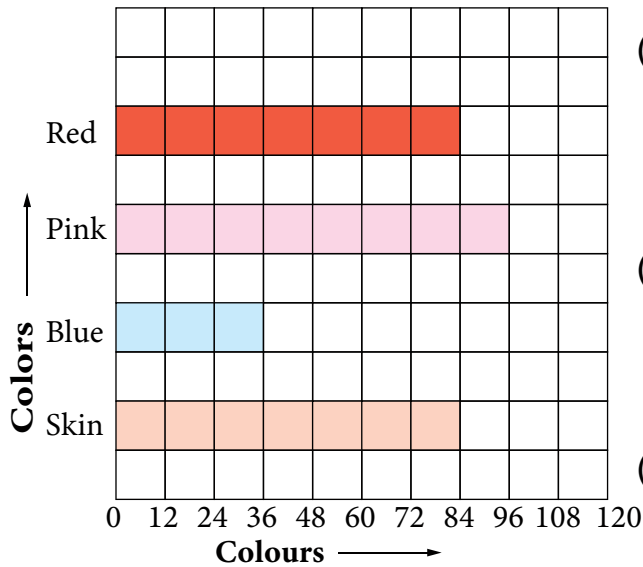
(b) What no. of children chose Hockey?

(c) What no. of children chose Cricket?

(d) What is the most popular sports and what no. of children chose it?

(e) How many more children chose Hockey than Golf ? _____

Q.2 The following bar graph shows the colors liked by the girls in a school:



(a) Which color is liked by most of the girls?

(b) Which color is liked by least of the girls?

(c) How many more girls like Pink than Skin?

(d) How many less girls like Blue than Pink? _____

(e) How many more girls like Red than Blue? _____

(f) Which two colors are liked by the equal no. of girls? _____